



MODULAR 4-WAY ELECTRONICALLY PILOTED VALVES

R-481-□



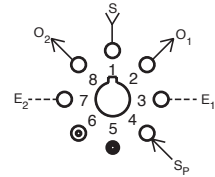
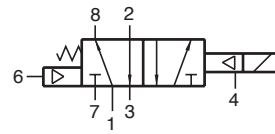
Electronic Valve

Features:

- Extremely low power consumption
- Micro gap construction - snap action and no blow by
- Standard octoport plug-in design
- Provides interface between electronics and pneumatics

Performance:

Working Range: 0 to 150 psig; 0 to 10.3 bars
Flow: 9 scfm @ 100 psig; 255 l/min @ 6.9 bars
Pilot Pressure (on port 4): 40 to 105 psig; 2.8 to 7.2 bars
Temperature: 32° to 180° F
Power Consumption: 0.65 watt at rated voltage



Voltage	R-481-6	6 VDC
	R-481-12	12 VDC
	R-481-24	24 VDC

Duty: Continuous duty at 150% of rated voltage (50% overload) permissible

Description:

R-481 is a fully ported (5-ported), 4-way valve. It is essentially a hybrid valve consisting of the R-401 valve and the Clippard model ET-3 electronic/pneumatic valve. The ET-3 responds to low current, low voltage signals and pneumatically actuates the R-401 4-way valve to which it is attached. A 40 psig pilot pressure must be present at port 4.

R-482-□



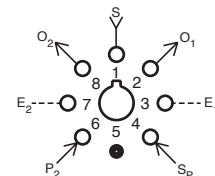
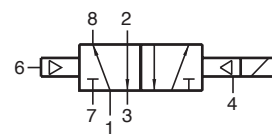
Electronic Valve

Features:

- Extremely low power consumption
- Micro gap construction - snap action and no blow by
- Standard octoport plug-in design
- Provides interface between electronics and pneumatics

Performance:

Working Range: 0 to 150 psig; 0 to 10.3 bars
Flow: 9 scfm @ 100 psig; 255 l/min @ 6.9 bars
Pilot Pressure: 20 to 105 psig; 1.4 to 7.2 bars
At Port 6 (min): 20
Temperature: 32° to 180° F
Power Consumption: 0.65 watt at rated voltage



Voltage	R-482-6	6VDC
	R-482-12	12VDC
	R-482-24	24VDC

Duty: Continuous duty at 150% of rated voltage (50% overload) permissible

Description:

R-482 is a fully ported (5-ported), 4-way valve. It is essentially a hybrid valve consisting of the R-402 valve and the Clippard model ET-3 electronic/pneumatic valve. The ET-3 responds to low current, low voltage signals and pneumatically actuates the R-402 4-way valve to which it is attached. A 20 psig pilot pressure must be present at port 4.